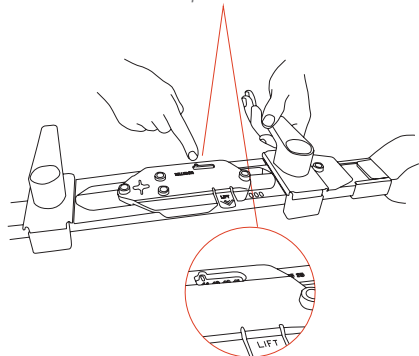


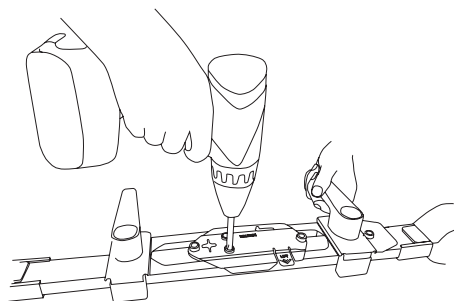
HOW TO MOUNT ROTTEFELLA ROLLERSKI

1 Mounting the Roller ski jig

Place the Roller ski inserts into the Rottefella jig. Adjust the insert to the correct shoe size and clamp the jig onto the roller ski as far back as possible.



Use the recommended drill bit size for correct diameter.

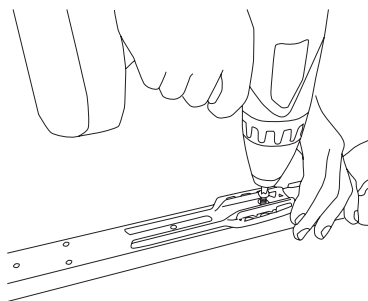


Drill bit (screw length = 16.3 mm): 3.6x9 mm

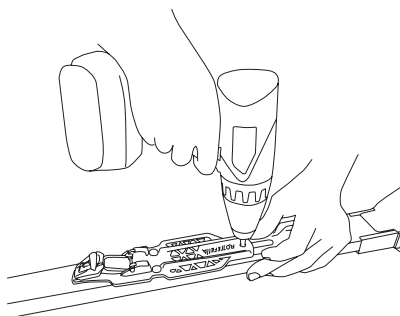
Drill bit (screw length = 21.8 mm): 3.6x15.5 mm

2 Mounting of binding house and heel

Align the binding heel hole with the drilled one in the roller ski. Use the screws included with the binding and screw the heel into place. Tighten by hand.

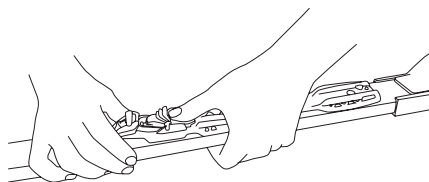


Place the binding house on the binding heel aligning the binding house holes with the drilled ones in the roller ski. Use the screws included and screw the house into place. Tighten by hand.



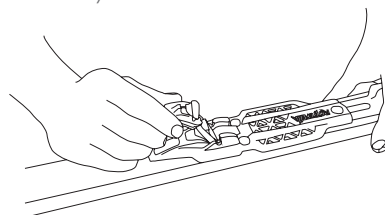
3 Mounting the flex

Push the flex until it clicks in place after screwing in all four screws.

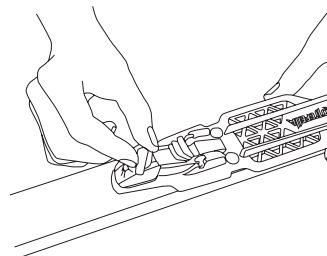


4 Using the safety lock

Step into the binding. Close the lever until you hear a click.



Turn the handle on the safety lock, covering the red line. The safety lock is now in a locked position.



ROTTEFELLA®



Scan the QR-code and see how Rottefella Rollerski Safety Lock works.

Warning: For Roller ski: Use Rottefella Rollerski binding with the included screws. Only suitable for roller ski purpose. Tighten screws regularly for safety. Use the safety lock for safe skiing. For longer lasting bindings, keep them free of dirt and mud. A damaged or cracked roller ski binding should never be used.