

ROTTEFELLA

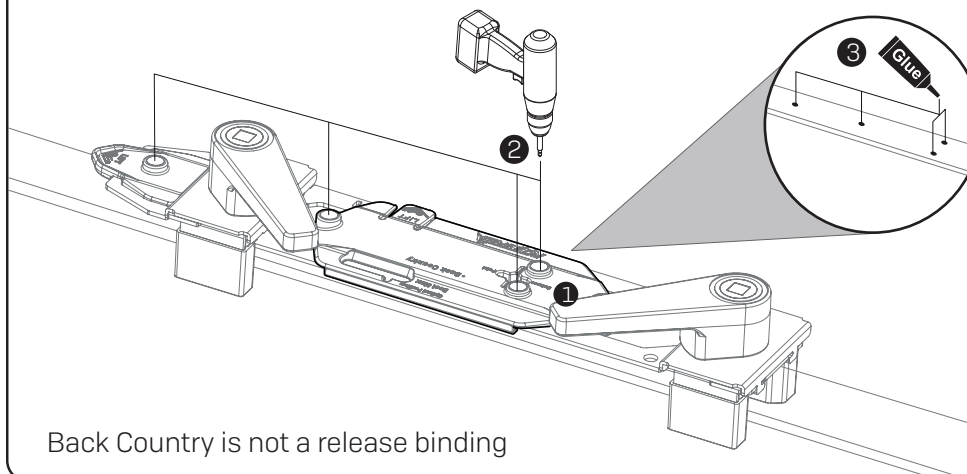
BACKCOUNTRY; MANUAL, AUTO AND MAGNUM



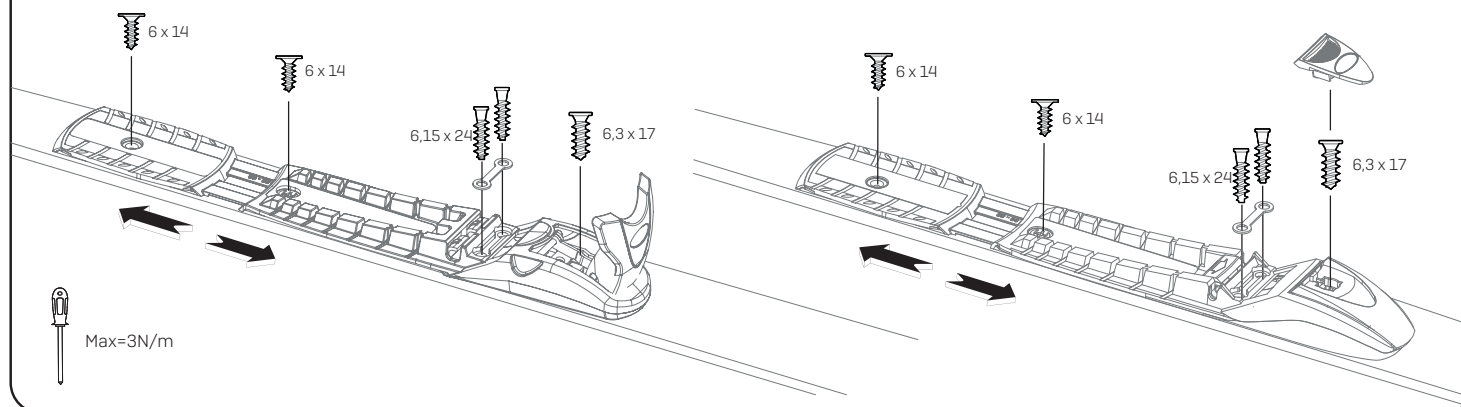
For roller ski: Use Rottefella Rollerski binding.

Ski length: All	Rottefella BC Manual Rottefella BC Auto Rottefella BC Magnum	15,5 mm Ø 3,6	Front: 6,3 x 17 Under flex: 6,15 x 24 Rear and heel: 6 x 14

- 1 Match correct shoe size, mount the jig with black BC-insert onto the ski, matching the balance point [1]. Drill using the advised drill bit [2], remove the jig and use binding glue into the holes [3]. Follow the recommendations from the skiproducers on type of glue.



- 2 Adjust heel to match shoe size and fasten the binding using the correct screw in each hole as illustrated below. Tighten screws manually.



- 3 Push the flex in place [1] and place stickers to cover up screw holes [2].

