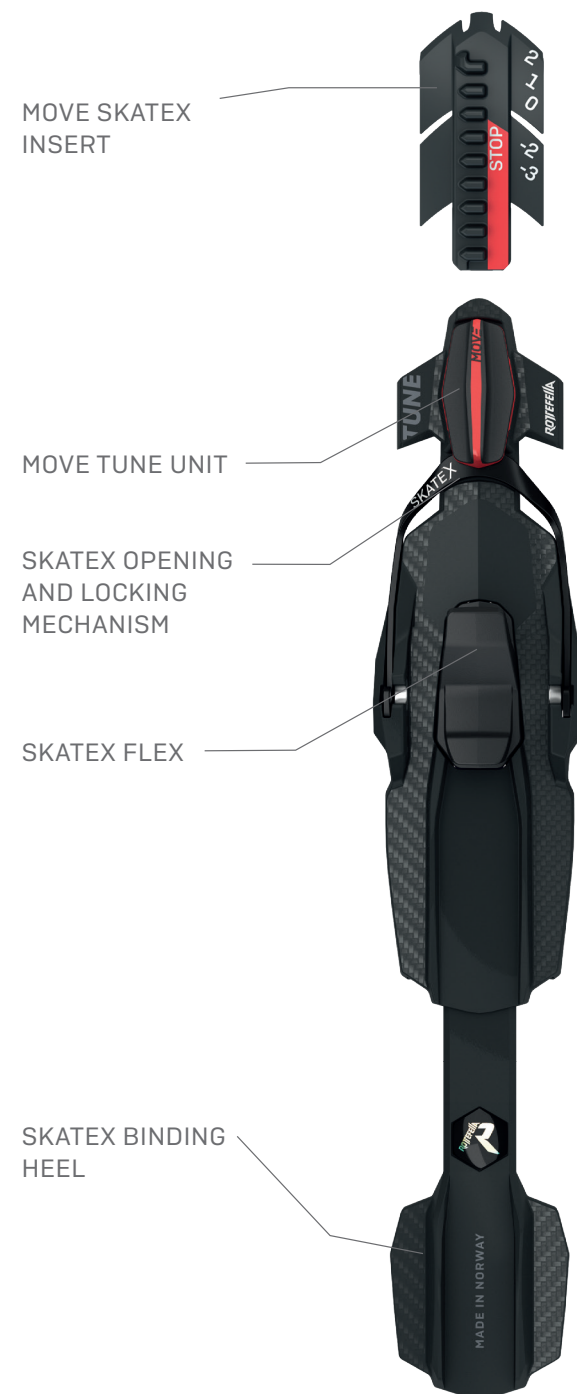


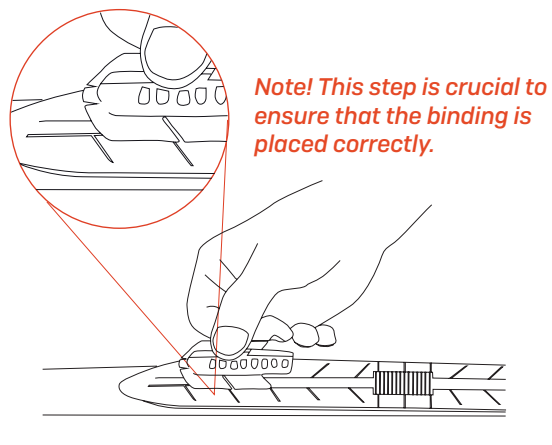
ROTTEFELLA SKATEX



HOW TO MOUNT ROTTEFELLA SKATEX BINDING ON NIS 1.0 MOUNTING PLATE

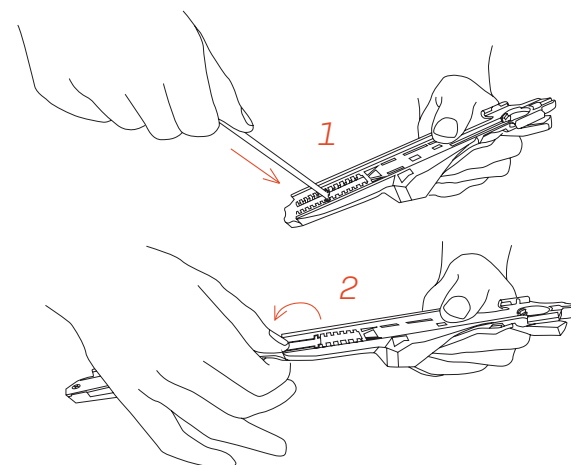
1 Placing the MOVE SkateX Insert on the mounting plate

Insert the MOVE SkateX insert into the first slot as shown below. Proper placement is crucial to ensure that the binding stops in the correct position



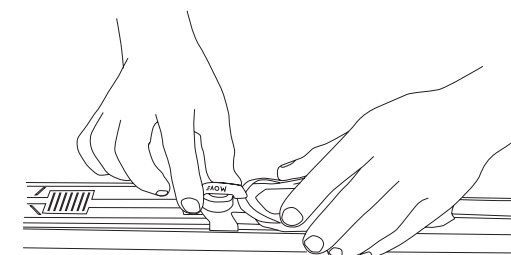
2 Mounting the binding together according to boot size

Turn the binding housing and heel plate with the underside facing up. Insert the heel plate into the binding housing at an angle as shown in step 1 below. When the forks on the heel plate is beneath the tabs on both sides of the binding housing, rotate the heel in place (step 2). Press down until you hear a click.

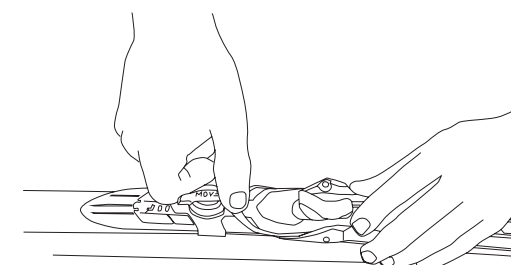
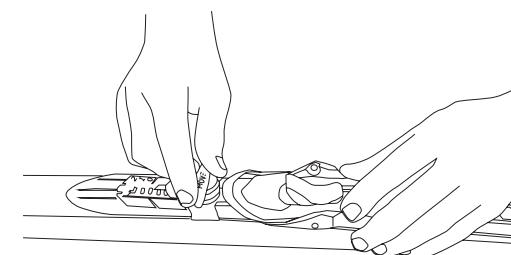


3 Mounting the SkateX binding onto the mounting plate

Slide the binding onto the mounting plate, starting from the back. Ensure that the tracks on the underside of the binding grasp with the tracks on the sides of the mounting plate. Also, ensure that the heel plate grasp with the tracks.



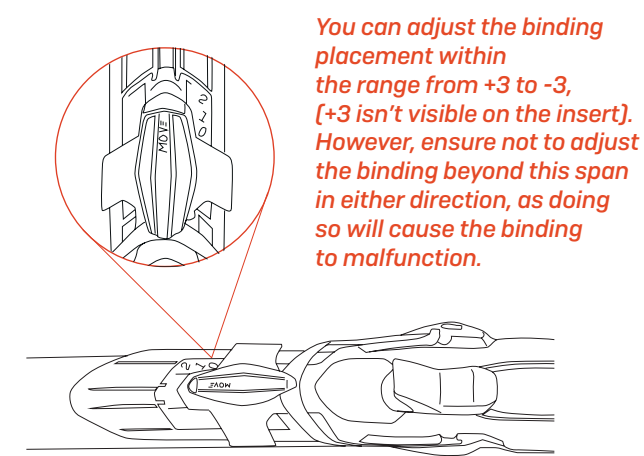
Push the binding forward until it stops. Turn the handle counter clockwise as shown in the illustration below, as you continue pushing the binding forward.



When using our equipment, it is your responsibility to learn the proper use of the equipment, and you accept all risks inherent in skiing. Please note that this equipment is designed for skate skiing only. This binding is not intended for rollerskiing. We have a different SkateX binding developed for rollerskiing.

4 Balance point, "0" position

Stop when the binding reaches the '0' position. The binding is now at the ski's balance point.



The MOVE handle serves two main purposes: it locks the opening and closing mechanism, and it allows for adjustment of the binding position.

HOW TO USE MOVE TUNE ON SKATEX

With Rottefella MOVE Tune, you can move your binding easily and quickly, and fine-tune your bindings based on snow conditions, the terrain and your technique.

With Rottefella MOVE Tune you get better control of your skis on hard-packed snow, and you get your skis to «float» over loose snow. Rottefella MOVE Tune provides you with better stability and control.

MOVE BINDING BACKWARDS AND FORWARDS

Turn the handle clockwise 180° to move the binding forwards on hard-packed snow. Turn the handle counter clockwise 180° to move the binding backwards for looser snow conditions. MOVE Tune on SkateX has 7 positions, 6 mm per step and 36 mm in total.